



American
Apparel®

Style & Color Guide 2021 USA

American Apparel Color Swatches



White
(000C)



Lemon
(601C)



Light Pink
(496C)



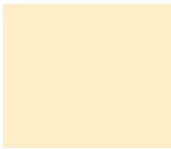
Heather Cranberry
(2042C)



Athletic Blue
(660C)



Baby Blue
(278C)



Natural
(7506C)



Sunshine
(127C)



Neon Heather Pink
(190C)



Truffle
(1817C)



Galaxy
(2152C)



Aqua
(637C)



Crème
(2309C)



Heather Gold
(3514C)



Fuchsia
(2039C)



Tri-Cranberry
(7644C)



Royal Blue
(7686C)



Turquoise
(638C)



Tri-Créole Pink
(489C)



Gold
(130C)



Heather Red
(193C)



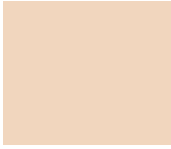
Eggplant
(518C)



Purple
(2096C)



Teal
(2393C)



Tri-Oatmeal
(4685C)



Heather Orange
(2024C)



Red
(200C)



Heather Plum
(5115C)



Lapis
(2756C)



Neon Heather Blue
(2394C)



Camel
(4635C)



Orange
(2027C)



Cranberry
(188C)



Navy
(2767C)



Tri-Indigo
(2378C)



Heather Lake Blue
(2151C)



Menthe
(2246C)



Heather Kelly Green
(2251C)



Ash Grey
(435C)



New Silver
(CG4C)



Heather Black
(7547C)



Grass
(7739C)



Kelly Green
(7726C)



Heather Lieutenant
(416C)



Heather Grey
(CG5C)



Tri-Black
(B3C)



Mint
(339C)



Ultra Blue
(7721C)



Lieutenant
(417C)



Slate
(CG8C)



Black
(B6C)



Mermaid Green
(7712C)



Olive
(5743C)



Tri-Lieutenant
(7497C)



Athletic Grey
(CG9C)



Sea Blue
(2377C)



Forest
(567C)



Military Olive
(7770C)



Asphalt
(CG11C)



Black Aqua
(2216C)



Heather Forest
(3308C)



Brown
(411C)



Dark Heather Grey
(425C)

Fabric Guide

Fine Jersey

100% Ring-Spun Combed Cotton
4.3 oz/yd² (146 g/m²)
30-singles

Decorating Techniques

DTG ☒
Embroidery ☐
Heat Transfer ☒
Screen Print ☒
Sublimation ☐

Poly-Cotton

50% Ring-Spun Combed Cotton
50% Polyester
4 oz/yd² (136 g/m²)
36-singles

Decorating Techniques

DTG ☒
Embroidery ☐
Heat Transfer ☒
Screen Print ☒
Sublimation ☒

Tri-Blend

50% Polyester, 25% Rayon
25% Ring-Spun Combed Cotton
4.0 oz/yd² (136 g/m²)
30-singles

Decorating Techniques

DTG ☒
Embroidery ☐
Heat Transfer ☒
Screen Print ☒
Sublimation ☒

Cotton Spandex

92% Ring-Spun Combed Cotton
8% Spandex
7.37 oz/yd² (250 g/m²)
32-singles

Decorating Techniques

DTG ☐
Embroidery ☒
Heat Transfer ☒
Screen Print ☒
Sublimation ☐

Interlock

100% Ring-Spun Combed Cotton
7.81 oz/yd² (265 g/m²)
30-singles

Decorating Techniques

DTG ☐
Embroidery ☒
Heat Transfer ☒
Screen Print ☒
Sublimation ☐

California Fleece

Outer

Inner

100% Ring-Spun Combed Cotton
7.2 oz/yd² (244 g/m²)
24-singles

Decorating Techniques

DTG ☐
Embroidery ☒
Heat Transfer ☒
Screen Print ☒
Sublimation ☐

Flex Fleece

Outer

Inner

50% Ring-Spun Combed Cotton Fleece
50% Polyester
8.2 oz/yd² (278 g/m²)
30-singles

Decorating Techniques

DTG ☐
Embroidery ☒
Heat Transfer ☒
Screen Print ☒
Sublimation ☐

Organic Fine Jersey

100% Organic Ring-Spun Combed Cotton
4.3 oz/yd² (146 g/m²)
30-singles

Decorating Techniques

DTG ☒
Embroidery ☐
Heat Transfer ☒
Screen Print ☒
Sublimation ☐

Sublimation

100% Polyester
4.5 oz/yd² (153 g/m²)
30-singles

Decorating Techniques

DTG ☐
Embroidery ☐
Heat Transfer ☒
Screen Print (Plastisol) ☒
Sublimation ☒

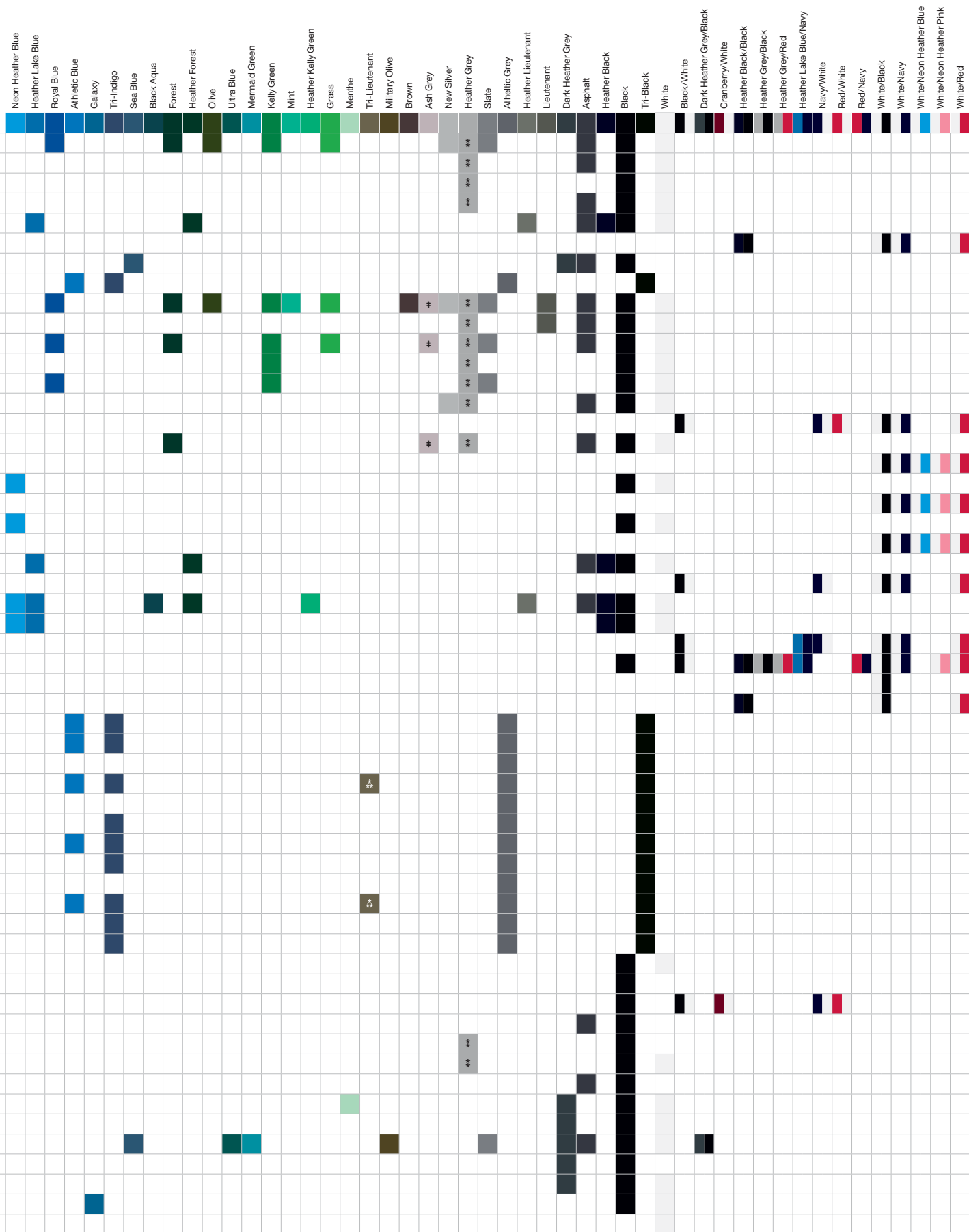
*Fiber content varies by color, see color list for exceptions.

Color Chart

				COLORS OFFERED																												
				Camel	Tri-Oatmeal	Crème	Tri-Creole Pink	Natural	Lemon	Sunshine	Heather Gold	Gold	Heather Orange	Orange	Light Pink	Neon Heather Pink	Fuchsia	Heather Red	Red	Cranberry	Heather Cranberry	Truffle	Tri-Cranberry	Eggplant	Heather Plum	Navy	Lapis	Purple	Baby Blue	Aqua	Turquoise	Teal
USA Collection	2001	Unisex Fine Jersey S/S T-Shirt	XS – 3XL	19																												
	2007	Unisex Fine Jersey L/S T-Shirt	S – 2XL	5																												
	2102	Women's Fine Jersey S/S T-Shirt	S – 2XL	3																												
	2408	Unisex Fine Jersey Tank	XS – 2XL	5																												
	BB401	Unisex Poly-Cotton S/S T-Shirt	S – 2XL	10																												
	BB453	Unisex Poly-Cotton 3/4 Sleeve Raglan T-Shirt	S – 2XL	4																												
	F497	Unisex Flex Fleece Zip Hoodie	XS – 2XL	5																												
TR401	Unisex Tri-Blend S/S Track T-Shirt	XS – 2XL	6		✖																											
Fine Jersey	2001W	Unisex Fine Jersey S/S T-Shirt	XS – 3XL	33																												
	2007W	Unisex Fine Jersey L/S T-Shirt	S – 2XL	9																												
	2102W	Women's Fine Jersey S/S T-Shirt	S – 2XL	18																												
	2105W	Kid's Fine Jersey S/S T-Shirt	2 – 6	10																												
	2201W	Youth Fine Jersey S/S T-Shirt	8 – 12	10																												
	2408W	Unisex Fine Jersey Tank	XS – 2XL	10																												
	2410W	Unisex Fine Jersey S/S Ringer T-Shirt	S – 2XL	6																												
	2456W	Unisex Fine Jersey S/S V-Neck T-Shirt	XS – 2XL	11																												
Poly-Cotton	BB053W	Infant Poly-Cotton 3/4 Sleeve Raglan T-Shirt	3/6 – 18/24	5																												
	BB101W	Kid's Poly-Cotton S/S T-Shirt	2 – 6	6																												
	BB153W	Kid's Poly-Cotton 3/4 Sleeve Raglan T-Shirt	2 – 6	5																												
	BB201W	Youth Poly-Cotton S/S T-Shirt	8 – 12	6																												
	BB253W	Youth Poly-Cotton 3/4 Sleeve Raglan T-Shirt	8 – 12	5																												
	BB301W	Women's Poly-Cotton S/S T-Shirt	S – 2XL	10																												
	BB310W	Women's Poly-Cotton S/S Ringer T-Shirt	S – XL	5																												
	BB401W	Unisex Poly-Cotton S/S T-Shirt	XS – 2XL	19																												
	BB408W	Unisex Poly-Cotton Tank	S – XL	7																												
	BB410W	Unisex Poly-Cotton S/S Ringer T-Shirt	XS – XL	6																												
	BB453W	Unisex Poly-Cotton 3/4 Sleeve Raglan T-Shirt	XS – 2XL	11																												
	BB953W	Dog Poly-Cotton 3/4 Sleeve Raglan T-Shirt	S – XL	1																												
	RSABB354W	Women's Poly-Cotton 3/4 Sleeve Cropped T-Shirt	XS/S – M/L	3																												
	Tri-Blend	TR201W	Youth Tri-Blend S/S T-Shirt	8 – 12	4																											
TR301W		Women's Tri-Blend S/S Track T-Shirt	S – 2XL	6		✖																										
TR308W		Women's Tri-Blend Racerback Tank	XS – 2XL	3																												
TR401W		Unisex Tri-Blend S/S Track T-Shirt	XS – 3XL	7		✖																										
TR408W		Unisex Tri-Blend Tank	S – XL	3																												
TR456W		Unisex Tri-Blend S/S Deep V-Neck T-Shirt	XS – XL	4																												

Fiber Content Exceptions Keys:

(*) 50% Polyester, 37% Cotton, 13% Rayon (Tri-Creole Pink, Tri-Lieutenant, Tri-Oatmeal); (‡) 90% Ring Spun Cotton, 10% Polyester (Heather Grey); (§) 99% Combed Ring Spun Cotton, 1% Polyester (Ash Grey)



COLLECTIONS

USA Collection

Fine Jersey

Cotton Spandex

California Fleece

Flex Fleece

Interlock

Sublimation

Poly-Cotton

Organic

Tri-Blend

Fashion Basics For Every Style.

American Apparel® is a premium brand that redefines fashion basics with a portfolio of classic styles and top-quality essentials. Our products are produced with high-quality U.S. cotton, ring-spun yarns and blended yarn fibers. Collections can feature inclusive silhouettes for every body type, side seams, stretch attributes and, more recently, tearaway labels.

Our basics are broken down into a few iconic collections to make sure you can always find exactly what you're looking for. We make fashion basics for every body and every hobby. For every day and every occasion. We make fashion basics a lifestyle.



USA Collection

This is the backbone of what American Apparel® was built on. It's our heritage, the American icon. Eight of our most enduring classic styles. As always, they're made with ethically harvested U.S. cotton and assembled right here in the United States of America.

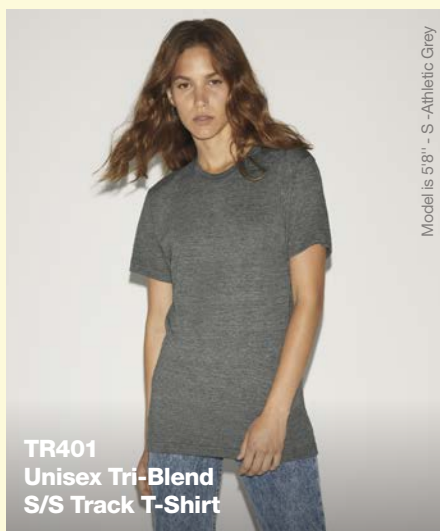


2001
Unisex Fine Jersey
S/S T-Shirt

XS - 3XL 19 COLORS*

CLASSIC FIT

100% COMBED RING SPUN COTTON 4.3 oz/yd²

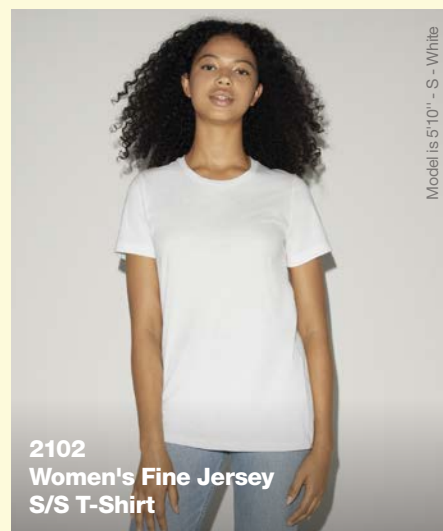


TR401
Unisex Tri-Blend
S/S Track T-Shirt

XS - 2XL 6 COLORS*

SEMI-FITTED

50% POLYESTER, 25% COMBED RING SPUN COTTON, 25% RAYON 4.0 oz/yd²

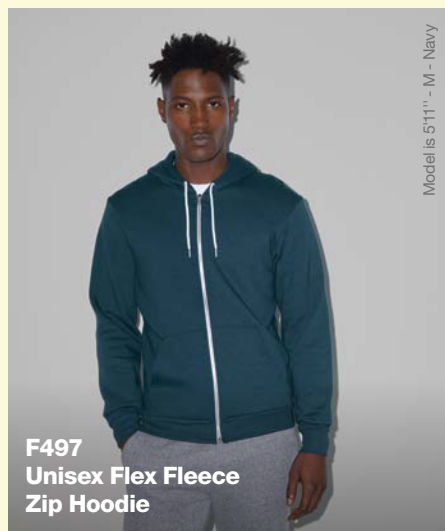


2102
Women's Fine Jersey
S/S T-Shirt

S - 2XL 3 COLORS*

FITTED

100% COMBED RING SPUN COTTON 4.3 oz/yd²



F497
Unisex Flex Fleece
Zip Hoodie

XS - 2XL 5 COLORS

SEMI-FITTED

50% COMBED RING SPUN COTTON 8.2 oz/yd²
50% POLYESTER



2007
Unisex Fine Jersey
L/S T-Shirt

S - 2XL 5 COLORS*

CLASSIC FIT

100% COMBED RING SPUN COTTON 4.3 oz/yd²



BB453
Unisex Poly-Cotton
3/4 Sleeve Raglan T-Shirt

S - 2XL 4 COLORS

SEMI-FITTED

50% COMBED RING SPUN COTTON 3.7 oz/yd²
50% POLYESTER

*Fiber content varies by color, see color list for exceptions.
Not all sizes available in all colors.
For color offerings, see T-Shirt colors on page 2 - 3.

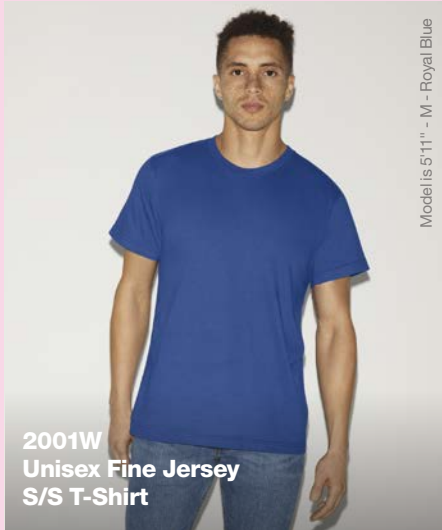
Full collection shown at
gildanbrands.com

7 T-SHIRTS
1 FLEECE

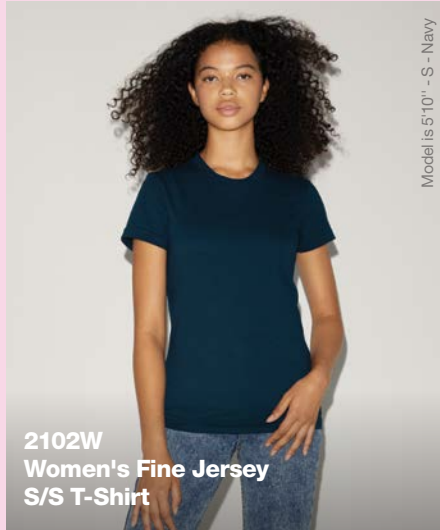
TOP STYLES
2001 - TR401 - BB401


Fine Jersey


This entire collection was developed around our original fashion basics tee: the 2001. A collection that holds eight of our greatest styles in combed ring spun cotton that are made from lightweight, super-smooth signature fabric, with a fit that was once considered modern and is now classic, inclusive and universal.



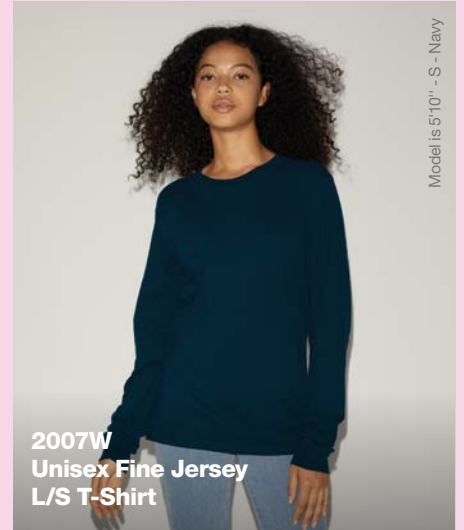
XS – 3XL	33 COLORS*	
CLASSIC FIT		
100% COMBED RING SPUN COTTON		4.3 oz/yd





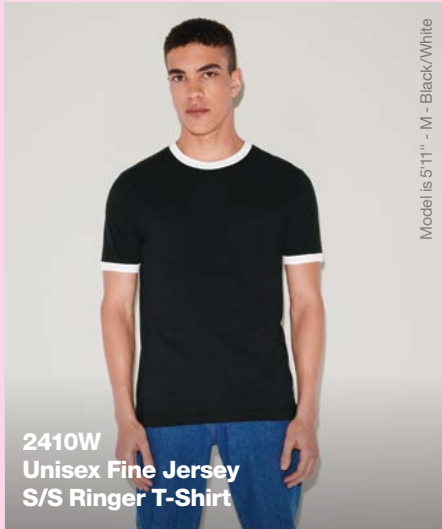
S - 2XL **18 COLORS*** 

FITTED 

100% COMBED RING SPUN COTTON **4.3 oz/yd²**



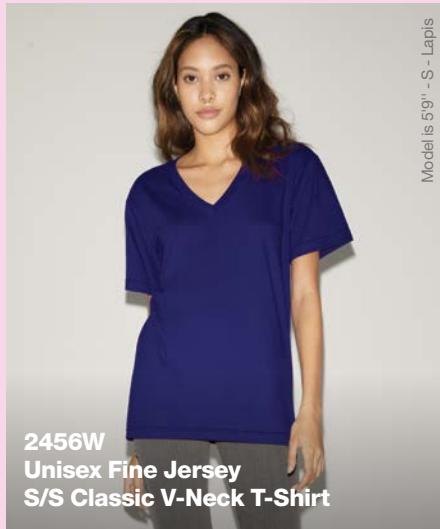
S - 2XL	9 COLORS*	
CLASSIC FIT		
100% COMBED RING SPUN COTTON		4.3 oz/yd ²




S - 2XL **6 COLORS** 

SEMI-FITTED 

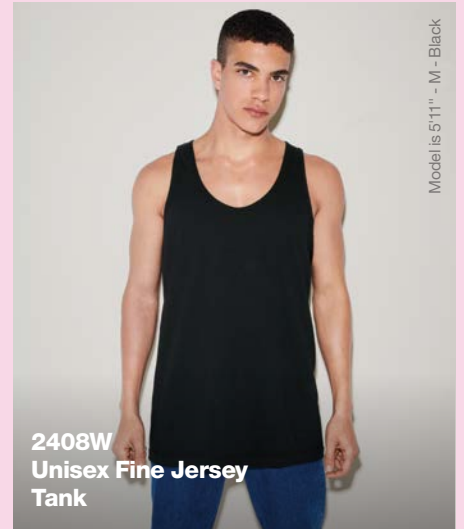
100% COMBED RING SPUN COTTON **4.3 oz/yd**



XS – 2XL **11 COLORS*** 

CLASSIC FIT 

100% COMBED RING SPUN COTTON **4.3 oz./yd²**



XS - 2XL	10 COLORS*	
CLASSIC FIT		
100% COMBED RING SPUN COTTON		4.3 oz/yd ²

*Fiber content varies by color, see color list for exceptions.
Not all sizes available in all colors.
For color offerings, see T-Shirt colors on page 2 - 3.

⊕ Full collection shown at gildanbrands.com

8 T-SHIRTS

TOP STYLES
2001W - 2007W - 2102W

Poly-Cotton

We created an essential collection born of an innovative poly-cotton blend that remains unchanged but just as relevant for today's market. It's your favorite cotton tee with a twist.

A combination of super-fine yarn and knitting makes it a premium fabric with a light, super-soft feel. Plus, it offers a superior, cleaner surface for printing that makes this collection easy to decorate and perfect for customization.



Model is 5'11" - M - Navy

BB401W
Unisex Poly-Cotton
S/S Crewneck T-Shirt

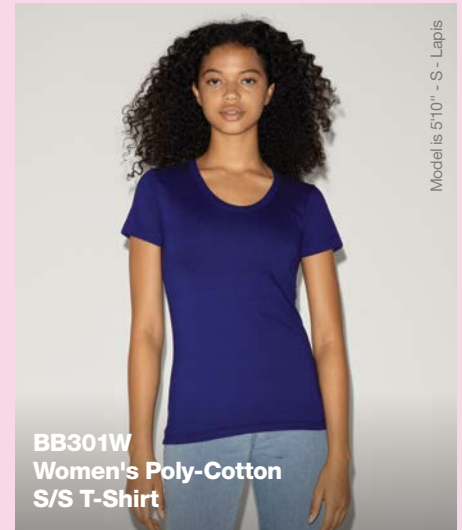
XS - 2XL 19 COLORS
SEMI-FITTED
50% COMBED RING SPUN COTTON
50% POLYESTER 4 oz/yd²



Model is 5'11" - M - Heather Grey/Black

BB453W
Unisex Poly-Cotton
3/4 Sleeve Raglan T-Shirt

XS - 2XL 11 COLORS
SEMI-FITTED
50% COMBED RING SPUN COTTON
50% POLYESTER 4 oz/yd²



Model is 5'10" - S - Lapis

BB301W
Women's Poly-Cotton
S/S T-Shirt

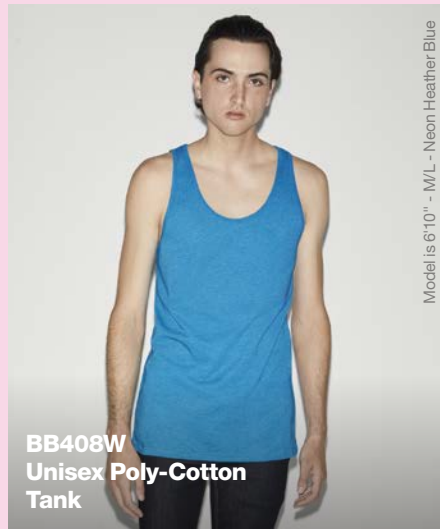
S - 2XL 10 COLORS
FITTED
50% COMBED RING SPUN COTTON
50% POLYESTER 4 oz/yd²



Model is 5'10" - S - Heather Lake Blue/Navy

BB410W
Unisex Poly-Cotton
S/S Ringer T-Shirt

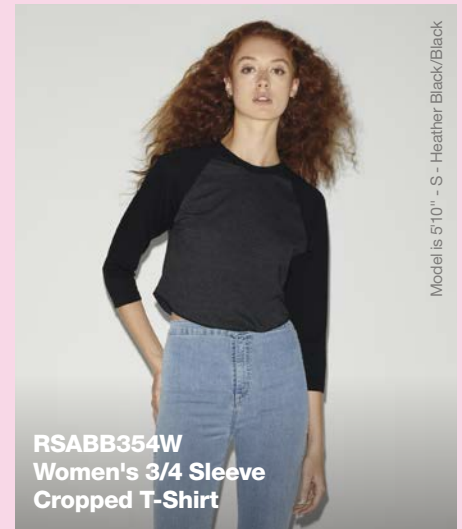
XS - XL 6 COLORS
SEMI-FITTED
50% COMBED RING SPUN COTTON
50% POLYESTER 4 oz/yd²



Model is 6'10" - M/L - Neon Heather Blue

BB408W
Unisex Poly-Cotton
Tank

S - XL 7 COLORS
SEMI-FITTED
50% COMBED RING SPUN COTTON
50% POLYESTER 4 oz/yd²



Model is 5'10" - S - Heather Black/Black

RSABB354W
Women's 3/4 Sleeve
Cropped T-Shirt

XS/S - M/L 3 COLORS
FITTED
50% COMBED RING SPUN COTTON
50% POLYESTER 4 oz/yd²

*Fiber content varies by color, see color list for exceptions.
Not all sizes available in all colors.
For color offerings, see T-Shirt colors on page 2 - 3.

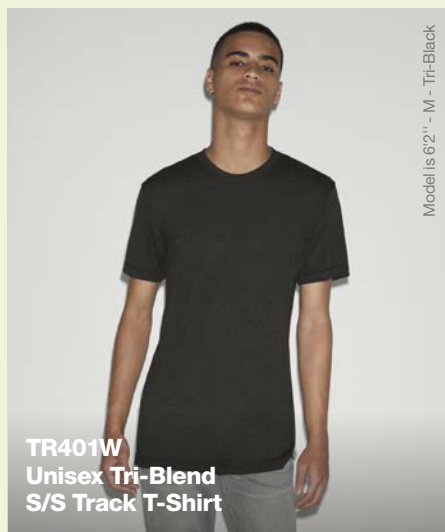
Full collection shown at
gildanbrands.com

12 T-SHIRTS

TOP STYLES
BB401W - BB453W - BB301W

Tri-Blend

These athleisure styles offer a combination of 50% polyester, 25% cotton and 25% rayon, which gives the tri-blend collection a nice heathered vintage look, total comfort. This light, extra-soft, airy fabric blend makes the knit highly breathable and perfect for sportswear. It won't shrink as much thanks to the polyester, and it has the fit and feel of your favorite vintage tee. The best of all worlds.



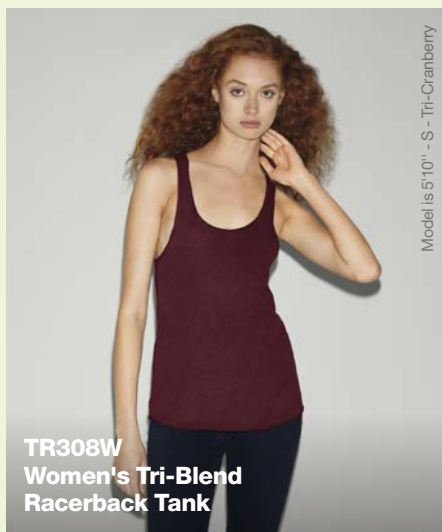
Model is 6'2" - M - Tri-Black

TR401W
Unisex Tri-Blend
S/S Track T-Shirt

XS - 3XL 7 COLORS*

SEMI-FITTED

50% POLYESTER, 25% COMBED RING SPUN COTTON, 25% RAYON 4.0 oz/yd²



Model is 5'10" - S - Tri-Cranberry

TR308W
Women's Tri-Blend
Racerback Tank

XS - 2XL 3 COLORS

FITTED

50% POLYESTER, 25% COMBED RING SPUN COTTON, 25% RAYON 4.0 oz/yd²



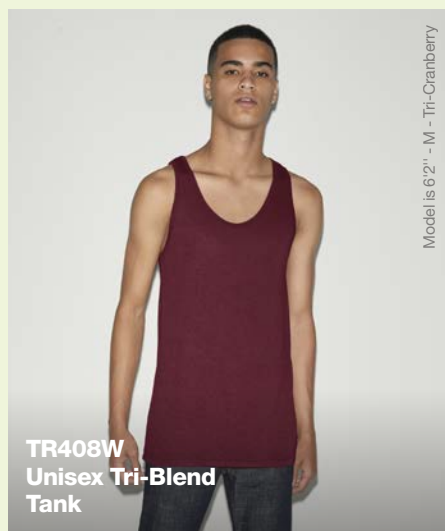
Model is 5'7" - M - Athletic Blue

TR461W
Unisex Tri-Blend
S/S V-Neck T-Shirt

XS - 2XL 4 COLORS

SEMI-FITTED

50% POLYESTER, 25% COMBED RING SPUN COTTON, 25% RAYON 4.0 oz/yd²



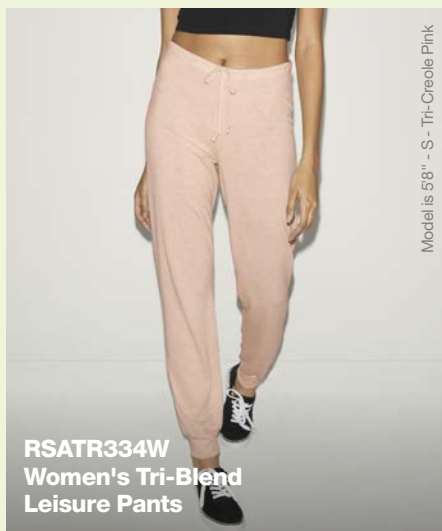
Model is 6'2" - M - Tri-Cranberry

TR408W
Unisex Tri-Blend
Tank

S - XL 3 COLORS

SEMI-FITTED

50% POLYESTER, 25% COMBED RING SPUN COTTON, 25% RAYON 4.0 oz/yd²



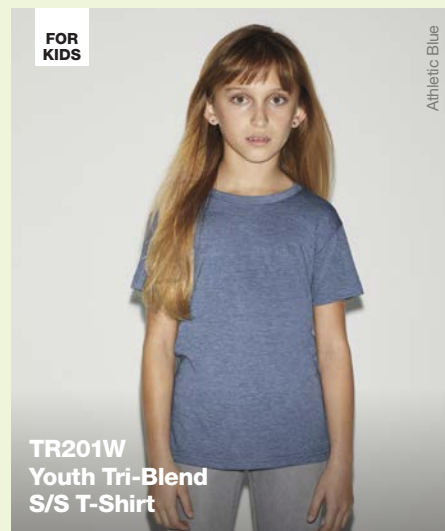
Model is 5'8" - S - Tri-Creole Pink

RSATR334W
Women's Tri-Blend
Leisure Pants

S - XL 3 COLORS

SEMI-FITTED

50% POLYESTER, 25% COMBED RING SPUN COTTON, 25% RAYON 4.0 oz/yd²



Athletic Blue

TR201W
Youth Tri-Blend
S/S T-Shirt

FOR KIDS 8 - 12 4 COLORS

CLASSIC FIT

50% POLYESTER, 25% COMBED RING SPUN COTTON, 25% RAYON 4.0 oz/yd²

*Fiber content varies by color, see color list for exceptions.
Not all sizes available in all colors.
For color offerings, see T-Shirt colors on page 2 - 3.

+ Full collection
shown at
gildanbrands.com

8 T-SHIRTS
2 FLEECE
2 PANTS

TOP STYLES
TR401W - TR301W - TR308W

Cotton Spandex

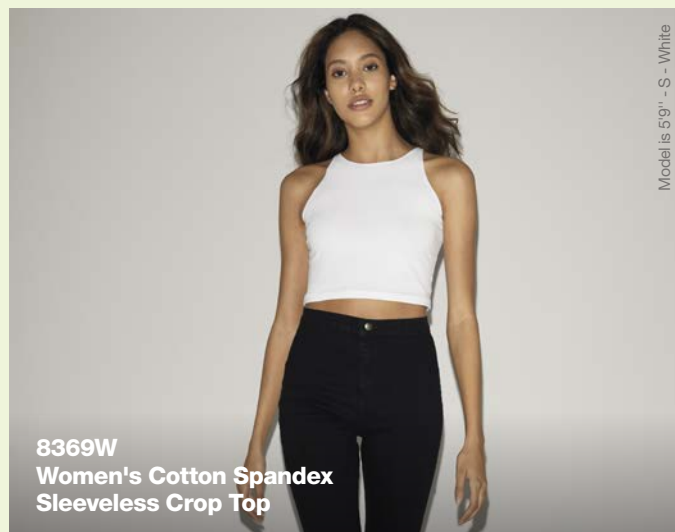
A collection where comfort and style refuse to compromise. With 92% cotton and 8% spandex, this collection offers the perfect amount of stretch for a comfortable, sleek, fashionably flattering fit. Looking good and feeling good.



8328W
Women's Cotton Spandex Leggings

XS - XL 2 COLORS ●●

FITTED
92% COTTON, 8% SPANDEX 7.37 oz/yd²



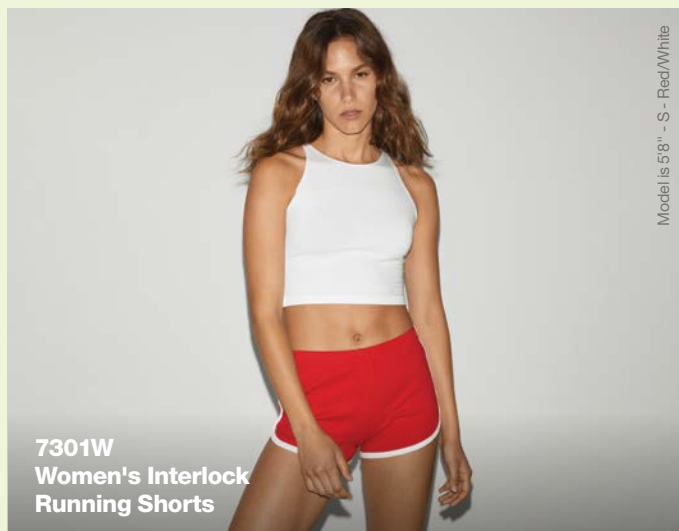
8369W
Women's Cotton Spandex Sleeveless Crop Top

XS - L 2 COLORS ●○

FITTED   
92% COTTON, 8% SPANDEX 7.37 oz/yd²

Interlock

This iconic vintage-athletic look is made to move and perfect for printing. With a thicker, yet somewhat light and more opaque fabric that lends support and some stretch, provides a sporty style with piping details.



7301W
Women's Interlock Running Shorts

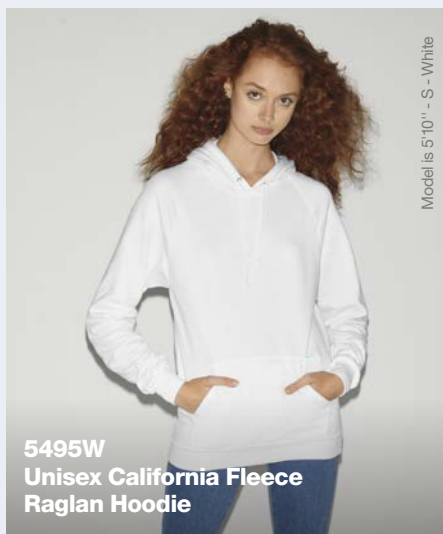
XS - XL 5 COLORS ●●●●●

FITTED
100% COMBED RING SPUN COTTON 7.81 oz/yd²

*Fiber content varies by color, see color list for exceptions.
Not all sizes available in all colors.
For color offerings, see T-Shirt colors on page 2 - 3.

California Fleece

This collection is made from 100% combed ring spun cotton with a natural brushed-fleece interior for lightweight and breathable year-round layering.



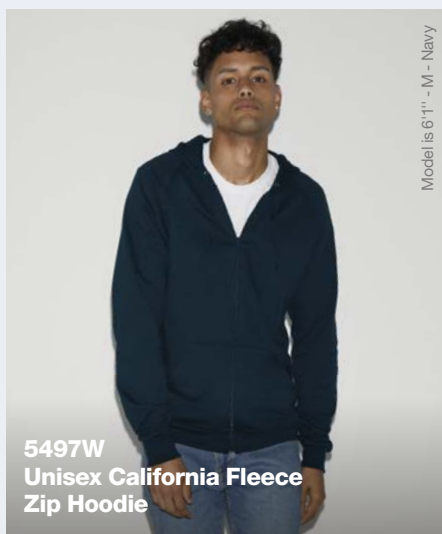
Model is 5'10" - S - White

5495W
Unisex California Fleece
Raglan Hoodie

XS - 2XL 4 COLORS

CLASSIC FIT

100% COMBED RING SPUN COTTON 7.2 oz/yd²



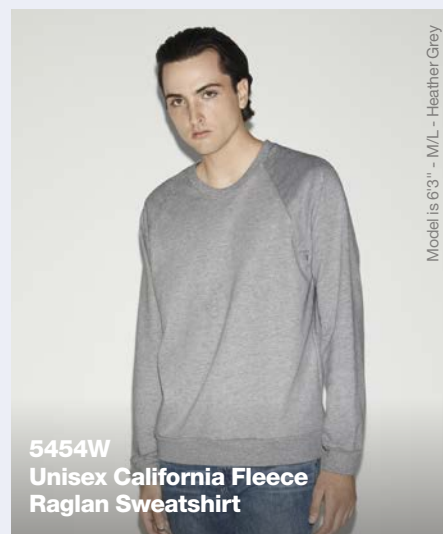
Model is 6'1" - M - Navy

5497W
Unisex California Fleece
Zip Hoodie

XS - 2XL 3 COLORS

CLASSIC FIT

100% COMBED RING SPUN COTTON 7.2 oz/yd²



Model is 6'3" - M/L - Heather Grey

5454W
Unisex California Fleece
Raglan Sweatshirt

XS - 2XL 3 COLORS

CLASSIC FIT

100% COMBED RING SPUN COTTON 7.2 oz/yd²

*Fiber content varies by color, see color list for exceptions.
Not all sizes available in all colors.
For color offerings, see T-Shirt colors on page 2 - 3.

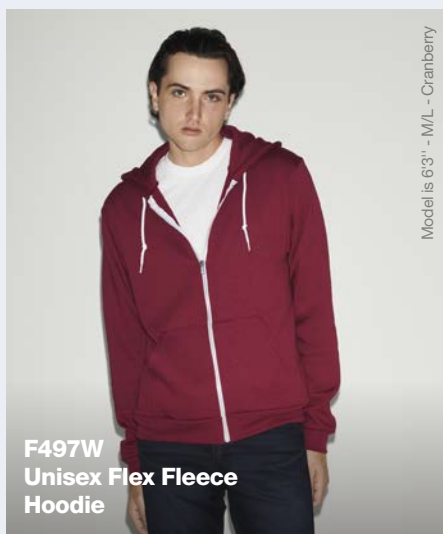
+ Full collection shown at
gildanbrands.com

4 FLEECE

TOP STYLES
5495W - 5497W - 5454W

Flex Fleece

The iconic white-zipper hoodie from American Apparel®. Our classic, everyday fleece made from a poly-cotton blend is medium-weight, flexible and cozy, with a soft-touch feel. It's a classic fit that wears itself almost like a tee.



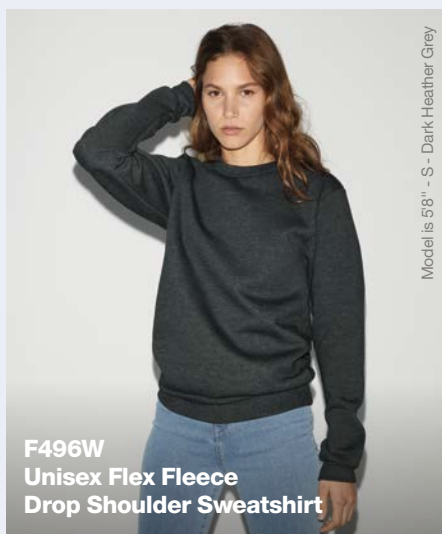
Model is 6'3" - M/L - Cranberry

F497W
Unisex Flex Fleece
Hoodie

XS - 3XL 16 COLORS

SEMI-FITTED

50% COMBED RING SPUN COTTON 8.2 oz/yd²
50% POLYESTER



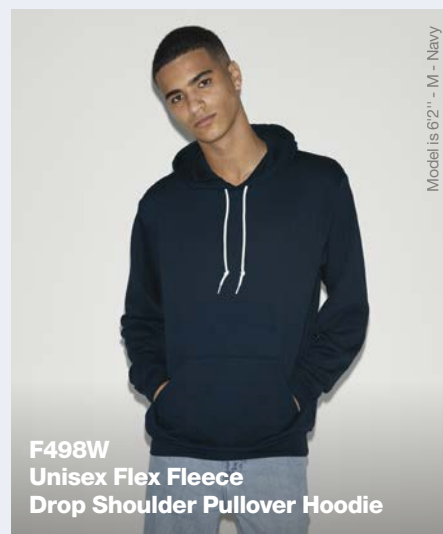
Model is 5'8" - S - Dark Heather Grey

F496W
Unisex Flex Fleece
Drop Shoulder Sweatshirt

XS - 2XL 4 COLORS

CLASSIC FIT

50% COMBED RING SPUN COTTON 8.2 oz/yd²
50% POLYESTER



Model is 6'2" - M - Navy

F498W
Unisex Flex Fleece
Drop Shoulder Pullover Hoodie

XS - 2XL 3 COLORS

CLASSIC FIT

50% COMBED RING SPUN COTTON 8.2 oz/yd²
50% POLYESTER

*Fiber content varies by color, see color list for exceptions.
Not all sizes available in all colors.
For color offerings, see T-Shirt colors on page 2 - 3.

+ Full collection shown at
gildanbrands.com

5 FLEECE

TOP STYLES
F497W - F496W - F498W

Organic

A classic look can also be totally organic. Crafted from 100% organic combed ring spun cotton with GOTS-certified yarns, this T-Shirt offers incredibly soft combed ring-spun softness. Looking good is looking pretty sustainable.



S - 3XL

4 COLORS

CLASSIC FIT

100% ORGANIC COMBED RING SPUN COTTON



4.3 oz/yd²

Sublimation

This T-Shirt is designed specifically for dye-sublimation printing while maintaining a ring-spun feel. As you know, natural cotton fibers do not react to sublimation dye when heat-pressed, unlike polyester, which is a synthetic fiber that works perfectly with sublimation dye. Sublimation allows for great photo-realistic printing.



XS - 2XL

1 COLORS

CLASSIC FIT

100% POLYESTER



4.5 oz/yd²

*Fiber content varies by color, see color list for exceptions.
Not all sizes available in all colors.
For color offerings, see T-Shirt colors on page 2 - 3.

Fit Guide



Classic

Always comfortable and never out of style, our classic fit tees are a timeless wardrobe staple.



Semi-Fitted

With a tapered slightly longer short sleeve, our semi-fitted tees lay closer to the body



Fitted

Not baggy or boxy, our fitted styles contour the body to create a slimming silhouette.



Sizing Chart

STYLE #	XXS/LXXS/YXXS	XS/LXS/YXS	S/LS/Y S	M/LM/YM	L/LL/YL	XL/LXL/YXL	2XL/L2XL/Y2XL	3XL/L3XL/Y3XL
T-Shirts								
2001 / 2001W		16 1/2" x 27 3/4"	18" x 28 3/4"	20" x 29 3/4"	22" x 30 3/4"	24" x 31 3/4"	26" x 32 3/4"	28" x 33 3/4"
2001ORGW			18" x 28 3/4"	20" x 29 3/4"	22" x 30 3/4"	24" x 31 3/4"	26" x 32 3/4"	28" x 33 3/4"
2007 / 2007W			18" x 28 1/4"	20" x 29 3/8"	22" x 30 1/2"	24" x 31 5/8"	26" x 32 3/4"	
2102 / 2102W			15 1/2" x 26"	16 1/2" x 26 1/2"	17 3/4" x 27 1/8"	19" x 27 3/4"	20 1/2" x 28 7/8"	
2410W			18" x 28"	20" x 29"	22" x 30 1/8"	24" x 31 1/8"	26" x 32 1/4"	
2456W		16 1/2" x 27 5/8"	18" x 28 3/4"	20" x 29 1/4"	22" x 30 3/8"	24" x 31 3/8"	26" x 32 1/2"	
8369W		12 1/8" x 14"	13 1/8" x 14 1/2"	14 1/8" x 15"	15 1/8" x 15 1/2"			
BB301W			16 1/8" x 25 5/8"	16 5/8" x 26 1/4"	17 1/8" x 26 7/8"	17 5/8" x 27 1/2"	18 1/8" x 28 1/8"	
BB310W			18" x 23 1/4"	19" x 23 3/4"	20" x 24 1/4"	21" x 24 3/4"		
BB401 / BB401W			18" x 28 3/4"	20" x 29 3/4"	22" x 30 3/4"	24" x 31 3/4"	26" x 32 3/4"	
BB410W		16" x 27 3/8"	17 1/2" x 28 3/8"	19 1/2" x 29 3/8"	21 1/2" x 30 3/8"	23 1/2" x 31 3/8"		
BB453 / BB453W			17 3/4" x 30"	19 3/4" x 31 1/4"	21 3/4" x 32 1/2"	23 3/4" x 33 3/4"	25 3/4" x 35"	
BB953W			8 3/8" x F 7 1/8" x B 10 3/4"	10 1/8" x F 9 1/4" x B 13 1/2"	11 7/8" x F 11 5/8" x B 16 1/4"	13 5/8" x F 14" x B 19"		
PL401W		16 1/2" x 27 1/8"	18" x 28 1/4"	20" x 29 3/8"	22" x 30 1/2"	24" x 31 5/8"	26" x 32 3/4"	
TR301W			16 1/8" x 25 5/8"	16 5/8" x 26 1/4"	17 1/8" x 26 7/8"	17 5/8" x 27 1/2"	18 1/8" x 28 1/8"	
TR308W		13" x 25 3/4"	14" x 26 1/4"	15" x 27"	16" x 27 1/2"	17" x 28 1/4"	18" x 28 3/4"	
TR401 / TR401W		16 1/2" x 27 3/4"	18" x 28 3/4"	20" x 29 3/4"	22" x 30 3/4"	24" x 31 3/4"	26" x 32 3/4"	
TR408W			17" x 28 1/2"	18 1/2" x 29 1/2"	20" x 30 1/2"	21 1/2" x 31 1/2"		
TR456W		15" x 27 1/2"	16 1/2" x 28 1/2"	18" x 29 1/2"	20" x 30 1/2"	22" x 31 1/2"		
TR461W		16 1/2" x 27 5/8"	18" x 28 3/4"	20" x 29 1/4"	22" x 30 3/8"	24" x 31 1/2"	26" x 32 5/8"	
TR480W		18" x 17"	18" x 17"	20" x 18 1/2"	20" x 18 1/2"			
RSABB354W		15 7/8" x 17 1/2"	15 7/8" x 17 1/2"	17 7/8" x 18 3/4"	17 7/8" x 18 3/4"			
YOUTH	SIZE 2	SIZE 4	SIZE 6	SIZE 8	SIZE 10	SIZE 12		
2105W	12 1/4" x 16 1/2"	13 1/8" x 17 5/8"	14" x 18 3/4"					
2201W				15 5/8" x 20 5/8"	16 5/8" x 22 1/4"	17 5/8" x 23 7/8"		
BB101W	12 1/4" x 16 1/2"	13 1/8" x 17 5/8"	14" x 18 3/4"					
BB153W	13" x 17"	14" x 18 1/2"	15" x 20"					
BB201W				15 5/8" x 20 3/4"	16 5/8" x 22 3/8"	17 5/8" x 23 7/8"		
BB253W				15 3/8" x 21 3/4"	16 3/8" x 22 3/4"	17 3/8" x 23 3/4"		
TR201W				14 3/4" x 21"	15 5/8" x 22 5/8"	16 1/2" x 24 1/4"		
INFANT	3/6	6/12	12/18	18/24				
BB053W	10 1/8" x 12 3/4"	10 7/8" x 14"	11 5/8" x 15"	12 1/8" x 16"				

Tanks								
2408 / 2408W		16 1/2" x 27 1/4"	18" x 28 1/4"	20" x 29 1/4"	22" x 30 1/4"	24" x 31 1/4"	26" x 32 1/4"	
BB408W			17" x 28 1/2"	18 1/2" x 29 1/2"	20" x 30 1/2"	21 1/2" x 31 1/2"		

Sweatshirts								
5431W			20 1/2" x 26 1/4"	22 1/2" x 27 1/2"	24 1/2" x 28 1/2"	26 1/2" x 29 3/4"	28 1/2" x 30 3/4"	
5454W		18 1/2" x 26"	19 1/2" x 27"	21 1/2" x 28"	23 1/2" x 29"	25 1/2" x 30"	27 1/2" x 31"	
5495W		16 1/4" x 27"	18 1/4" x 28"	20 1/4" x 29"	22 1/4" x 30"	24 1/4" x 31"	26 1/4" x 32"	
5497W		16 1/2" x 27"	18 1/4" x 28"	20 1/4" x 29"	22 1/4" x 30"	24 1/4" x 31"	26 1/4" x 32"	
F397W		15 1/2" x 17 1/2"	16 1/2" x 18"	17 1/2" x 18 1/4"	18 1/2" x 18 7/8"			
F496W		18" x 26 1/4"	20" x 27 1/4"	22" x 28 1/4"	24" x 29 1/4"	26" x 30 1/4"	28" x 31 1/4"	
F497 / F497W		17" x 26"	19" x 27"	21" x 28"	22" x 29"	23 1/2" x 30"	25" x 31"	26 1/2" x 32"
F498W		17 1/2" x 26 1/4"	19 1/2" x 27 1/4"	21 1/2" x 28 1/4"	23 1/2" x 29 1/4"	25 1/2" x 30 1/4"	27 1/2" x 31 1/4"	
RSAF3451W			20 3/4" x 18 1/2"	21 3/4" x 19"	22 3/4" x 19 1/2"			
RSATR436W		20" x 27 3/8"	21" x 28"	22" x 28 5/8"	23 1/2" x 29 1/4"	25" x 29 7/8"		
RSATR3353W			20" x 18 1/2"	21" x 19"	22" x 19 1/2"	23" x 20"		

Bottoms								
7301W		6 3/4" x 10 1/2"	7 1/4" x 11 1/2"	8 1/4" x 13 1/2"	8 1/4" x 13 1/2"	8 3/4" x 14 1/2"		
8328W		34" x 12 1/8"	34 1/2" x 13 1/8"	35" x 14 1/8"	35 1/2" x 15 1/8"	36" x 16 1/8"		
RSATR334W			41" x 14 1/2"	41 1/2" x 15 1/2"	42" x 16 1/2"	42 3/4" x 17 3/4"		
RSATR3354W			12" x 15 1/2"	12 1/2" x 16 1/2"	13" x 17 1/2"	13 1/2" x 18 1/2"		



**Globally Sourced.
Ethically Made.
Crafted With
Consciousness.**

We take pride in being agents of change, committed to creating a positive impact on the people who design, make, decorate, distribute and wear our clothes. We believe in a holistic and sustainable approach to production.

As a part of Gildan, we follow their Genuine Responsibility® program, meaning we take care of our people and actively work towards creating stronger communities and conserving the environment. We want to go beyond product quality and positively change how apparel is made.



We strive for OEKO-TEX® certification, so you know they are always free of harmful chemicals and safe to wear.

We are a proud member of the Sustainable Apparel Coalition and are committed to measuring and improving the social and environmental effects of our business. That's why we are also WRAP certified and pleased to represent safe, lawful, humane, sustainable and ethical manufacturing.

At American Apparel, we believe in a production that is both ethical and conscious. That's just basic common sense.

Find out more at genuineresponsibility.com

Awards, recognition, certifications and high fives.





American Apparel® Brings Fashion Back To Basics.

Weathering the Storm of 2020.

The global COVID-19 pandemic forced all businesses to adjust to new realities. American Apparel® was no different. But we're built on strong foundations: top-quality products, iconic styles, ethical business practices and an excellent network of partners like you. So we're confident that the fashion basics market is set to expand again and, thanks to our competitive advantages and great collaborators, we've got everything we need to lead again.

Timeless Fashion Basics.

American Apparel® has helped to define and promote iconic fashion basic styles and inspire culture from the company's inception and has been embraced the world over. Now we're looking to the future to improve our product line with a focus on the printwear industry. Because American Apparel® always has, and always will, stand for quality fashion basics.

We Get It Right.

We follow a fundamental code of conduct, which means we maintain the highest manufacturing standards and use only high-quality, ethically sourced materials. In fact, we are one of the largest North American purchasers of ethically produced U.S.-grown cotton. And we've invested in new technology to improve our vertically integrated manufacturing process. Because we believe that owning our supply chain is the best way to maintain our commitment to strong environmental, social and governance practices as our industry and business evolve.

We have an unwavering commitment to the quality of our products. We obsess over the details of our fabrics, threads and cuts. We've streamlined our product offering to focus on our most iconic and bestselling styles. And our focus on quality doesn't come at the expense of the planet.